

Scientek™

Hospital and Laboratory Equipment

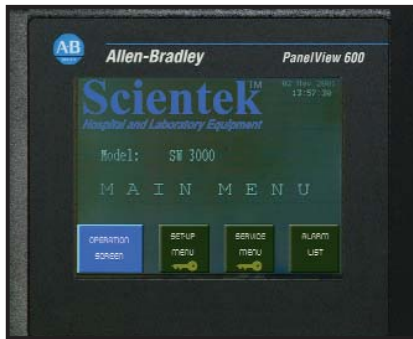
SMART CONTROLLER



Put Yourself in Control

The program is the brain behind the entire washing operation, and now it operates and communicates like nothing ever has before.

The Scientek Washer Control System, with its industry leading functionality, delivers knowledge and knowledge is power. It is immediately evident the moment you operate the touch screen. The guesswork has gone; the options - logical and obvious. Remarkable ease of operation allows you to determine the where, the when and the what at the touch of a finger.



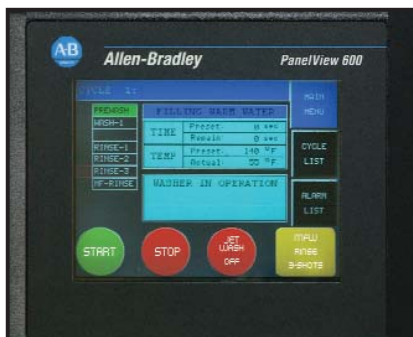
MAIN MENU SCREEN

Full colour touch interface for simple user operation.



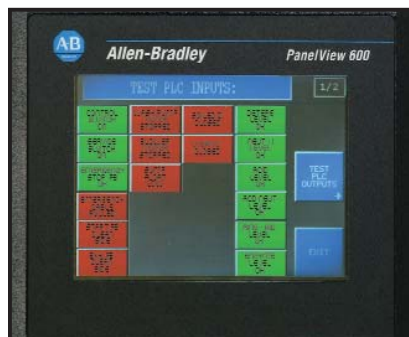
SET-UP MENU SCREEN

(with keyed lockout)
Full cycle parameter adjustments, cycle descriptions, times, temperatures, events and chemicals.



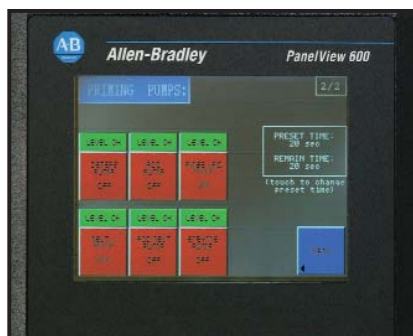
OPERATION SCREEN

Cycle selection, 10 descriptive operations with user lockout ability.



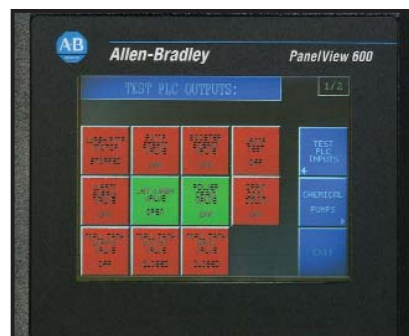
SERVICE MENU SCREENS

(with keyed lockout)
Full diagnostic capabilities at a touch, colour coded operation test for each input or output signal via PLC to device. Review alarm history of last 50 stored events.



PRIMING PUMPS SCREEN

Pre-prime for chemical treatment pumps and monitor chemical reservoir levels.



Reports, dates, times, and alarm description. For example;

- Emergency cable stop.
- Low temperature alarm.
- Low chemical alarm.

Brilliantly Conceived, Planned and Executed

Built entirely with proven Allen - Bradley components, the Scientek Smart Control System is designed to perform in a rigorous and highly demanding environment.

Armed with Scientek's powerful, yet flexible, software, there is no finer complete system existing today. It handles the coordination and all the complexities with ease while providing full operating knowledge.

It's the right choice, it's the "smart" choice!

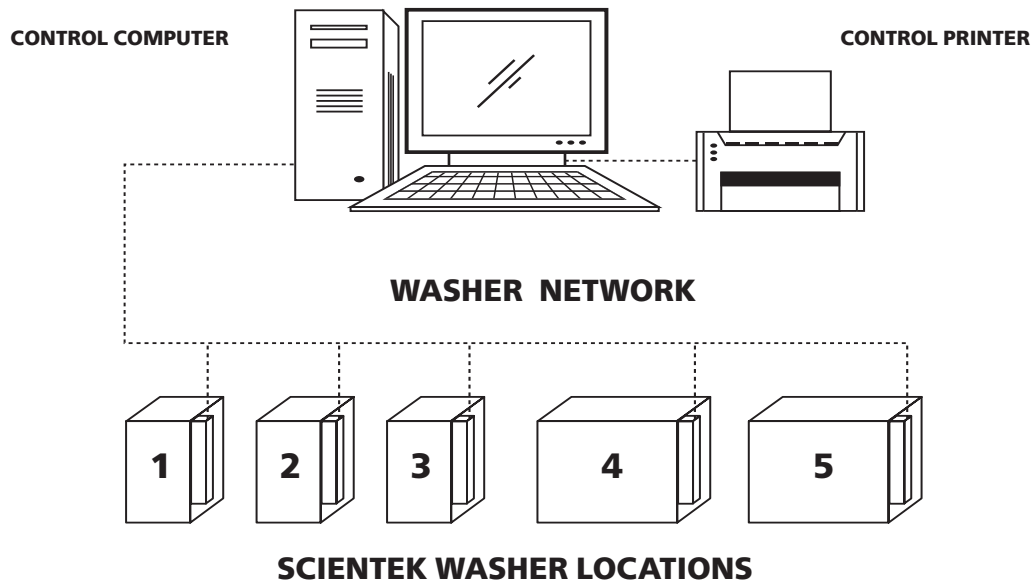
EXCEPTIONAL HARDWARE FEATURES - STANDARD

- Allen - Bradley colour touch screen operator interface
- Allen - Bradley MicroLogix plc
- Modem for factory access (troubleshooting/updates)
- Printer connection
- 24 vdc controls

EFFICIENT PROGRAM FEATURES - STANDARD

- User friendly operator interface with real time/date
- 10 Pre-programmed full descriptive cycles
- All cycle parameters adjustable for personal flexibility
- User definable cycle description
- Cycle lock-out feature
- Service/test mode all control inputs and outputs
- User definable descriptions of chemicals
- Priming of chemical pumps
- Temperature calibration °F/°C
- Alarm history (last 50 alarms)
- User ready for Scientek data reporting system

Centralized Control Data Reporting System



DATA REPORTS

Whether viewed on screen, printed, or exported, meticulous reports keep you on top of everything. Built-in flexibilities allow you to target data by date, time, machine and alarms.

SCIENTEK DATA REPORTING SYSTEM FEATURES:

- Cycle data collected from each washer
- Historical data stored for four months
- Generate reports by date/time selection
- Review reports on the PC screen or print on the optional printer
- Export report data to alternate network

Scientek reserves the right to modify materials and specifications and to make product improvements without prior consent.

For additional product information please contact the factory or the Scientek representative in your area.

ScientekTM
Hospital and Laboratory Equipment

11151 Bridgeport Road
Richmond, BC, Canada V6X 1T3
Tel: (604) 273-9094
Fax: (604) 273-1262
E-mail: sales@scientek.net
www.scientek.net